

1041 N. BRYANT

EDMOND, OK 73034



PROPERTY DESCRIPTION

1041 N. Bryant is conveniently located in the Kingston Office Park in the heart of Edmond. Tenants will find that everything they need is just a short drive away from this space. This suite provides a unique opportunity for tenants in the market for rent ready space. Nearby neighbors include: Kickingbird Golf Club, Target, Walgreens, Chick Fil-A and more.

PROPERTY HIGHLIGHTS

- Flexible layout, could be used as four private offices, or three private offices and a conference room.
- High-end finishes Private restrooms within the suite
- Free surface parking
- Suite includes a built-out break area

OFFERING SUMMARY

| | |
|-----------------------|------------------------------|
| Lease Rate: | \$17.00 SF/yr (Full Service) |
| Building Size: | 3,000 SF |
| Available SF: | 1,250 SF |

IAN SELF

iself@priceedwards.com
O: 405.239.1271

TRE DUPUY

tdupuy@priceedwards.com
O: 405.239.1210 C: 405.412.3810

1041 N. BRYANT

EDMOND, OK 73034



IAN SELF

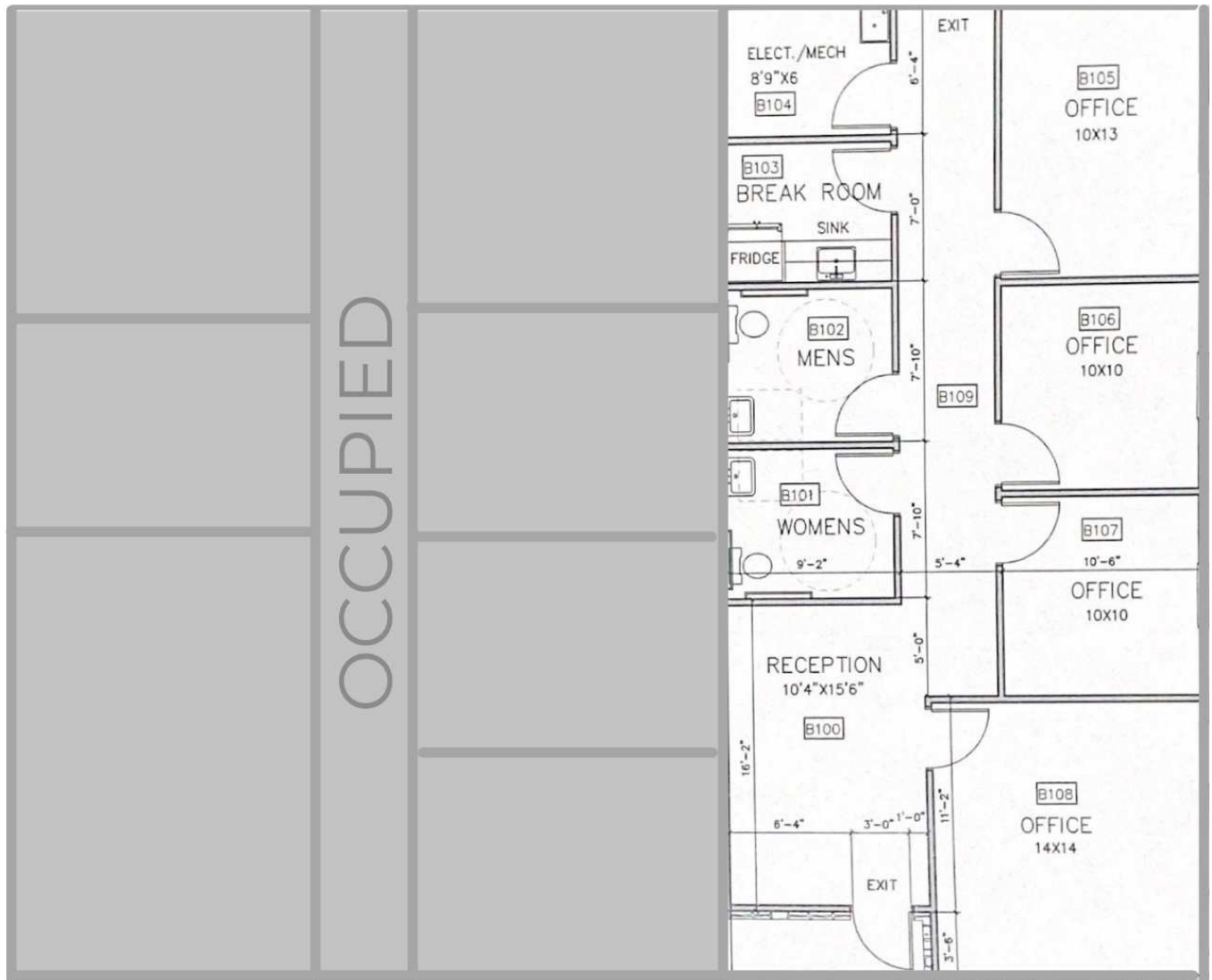
iself@priceedwards.com
O: 405.239.1271

TRE DUPUY

tdupuy@priceedwards.com
O: 405.239.1210 C: 405.412.3810

1041 N. BRYANT

EDMOND, OK 73034



IAN SELF

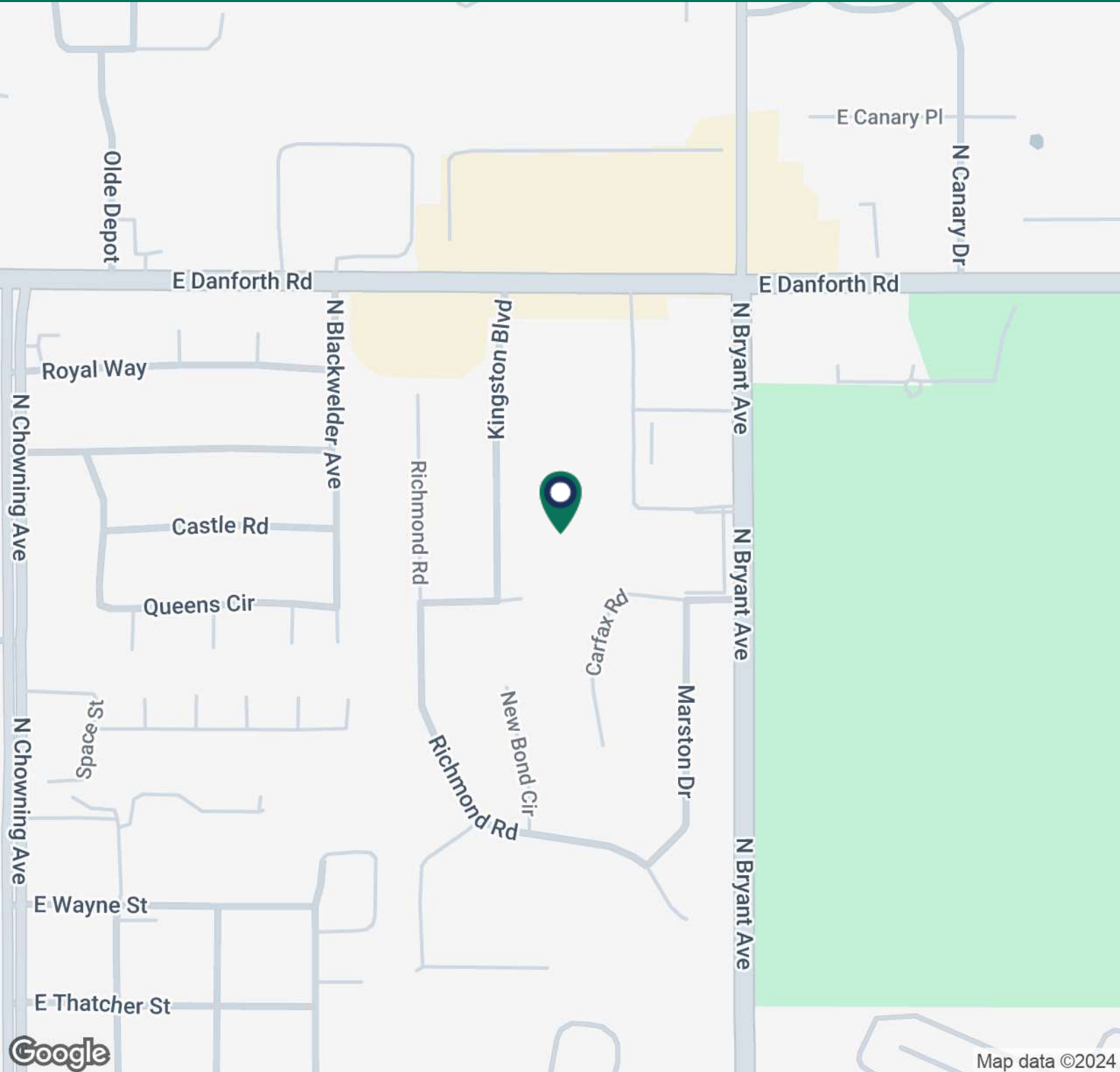
iself@priceedwards.com
O: 405.239.1271

TRE DUPUY

tdupuy@priceedwards.com
O: 405.239.1210 C: 405.412.3810

1041 N. BRYANT

EDMOND, OK 73034



IAN SELF

iself@priceedwards.com
O: 405.239.1271

TRE DUPUY

tdupuy@priceedwards.com
O: 405.239.1210 C: 405.412.3810