

PROPERTY DESCRIPTION

The West Park development land consist of 1.37 acres directly to the west of the 70 acre MAPs 3 park, expected to be completed in 2018. This site is the only assembled block west of the park and is situated for high-rise multi-family, hospitality, office and retail development. The property is located next to the street car system that will be completed in 2018.

LOCATION DESCRIPTION

The West Park development land is the only assemble block directly to the west of the MAPs 3 70 acre park, expected to be completed in 2018. This site is next to the Street Car route which travels to the Chesapeake Arena, Downtown Oklahoma City (CBD), Bricktown, Midtown and future expansion into the Oklahoma Health Center and Innovation district.

PROPERTY HIGHLIGHTS

- Located directly west of MAPs 3 Central Park
- Only assembled block west of the park
- Next to street car route
- Across from the new convention center development
- TIF available in the West Park District

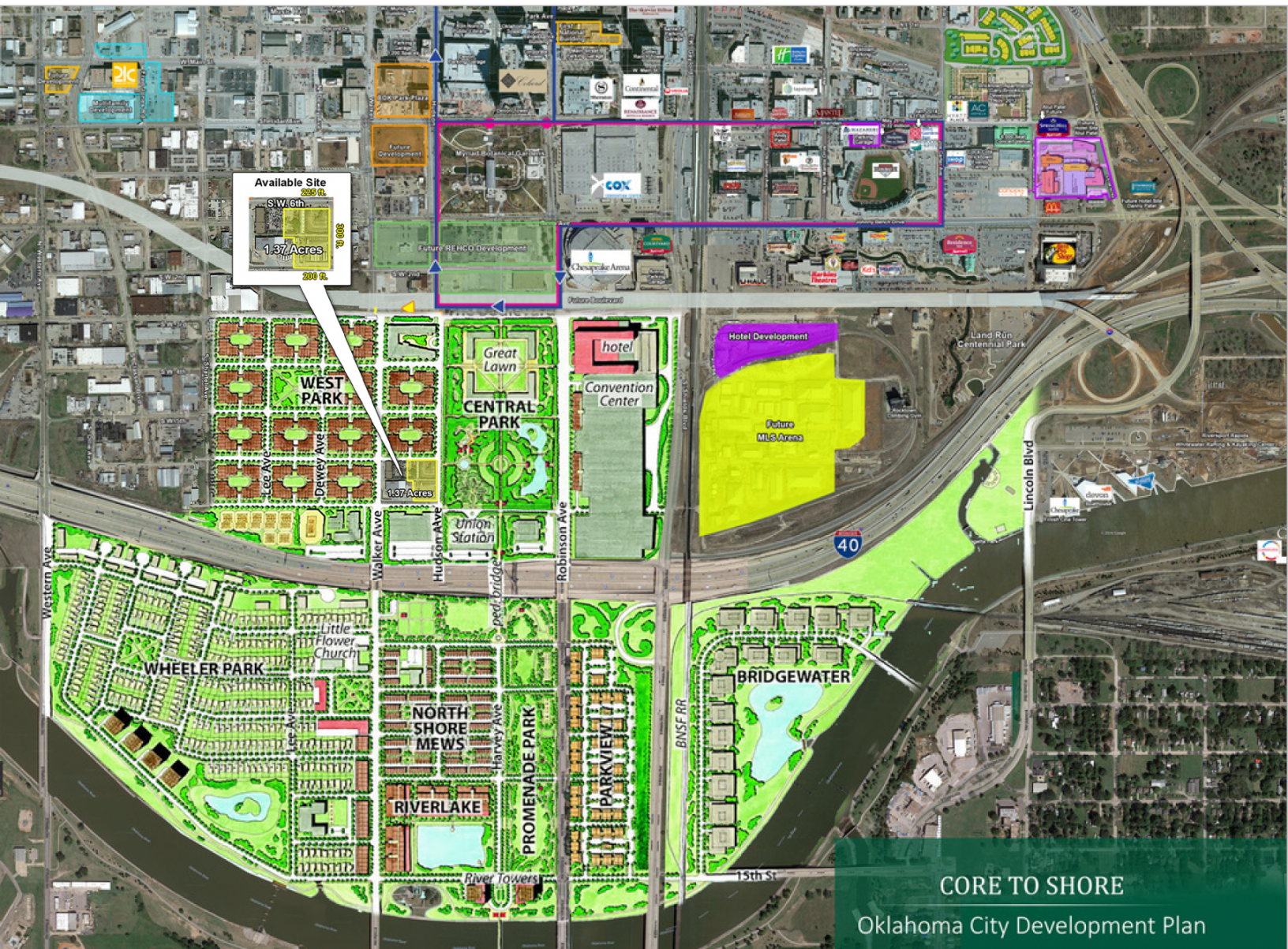
OFFERING SUMMARY

Sale Price:	Subject To Offer
Lot Size:	1.37 Acres
Market:	Downtown
Submarket:	West Park

PHILLIP MAZAHERI, CCIM

pmazaheri@priceedwards.com

O: 405.239.1221 C: 405.250.0693



PHILLIP MAZAHERI, CCIM

pmazaheri@priceedwards.com

O: 405.239.1221 C: 405.250.0693

DOWNTOWN WEST PARK DEVELOPMENT LAND

OKLAHOMA CITY, OK



Imagery ©2023 CNES / Airbus, Maxar Technologies, U.S. Geological Survey, USDA/FPAC/GEO



PHILLIP MAZAHERI, CCIM

pmazaheri@priceedwards.com

O: 405.239.1221 C: 405.250.0693