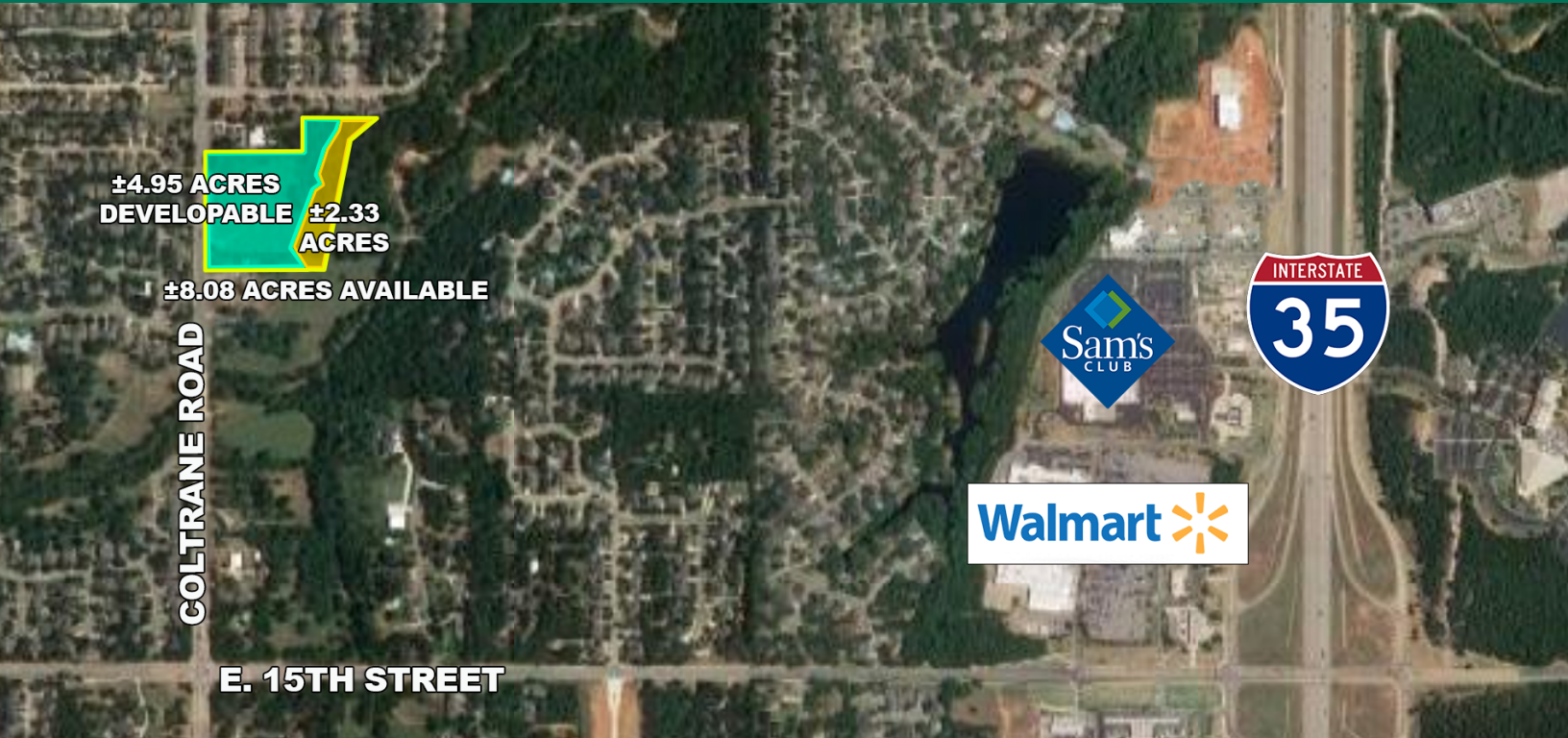


DEVELOPMENT LAND FOR SALE COLTRANE, BETWEEN 15TH AND 2ND ST. EDMOND, OK 73034



**±4.95 ACRES
DEVELOPABLE ±2.33
ACRES**

±8.08 ACRES AVAILABLE

COLTRANE ROAD

E. 15TH STREET



LOCATION DESCRIPTION

Located one mile west of I-35, on the east side of Coltrane Road just north 15th Street.

PROPERTY HIGHLIGHTS

- Zoned PUD Office & Neighborhood Retail Use
- ± 497 feet of frontage on Coltrane
- R189257000 OK County Assessor Account Number
- ±8.08 area total
- ±4.95 acres developed
- Easily accessible from I-35
- Waterline (12 inch) on West side of Coltrane
- Sewer available East of Springcreek
- Electric, gas & telephone along Coltrane

OFFERING SUMMARY

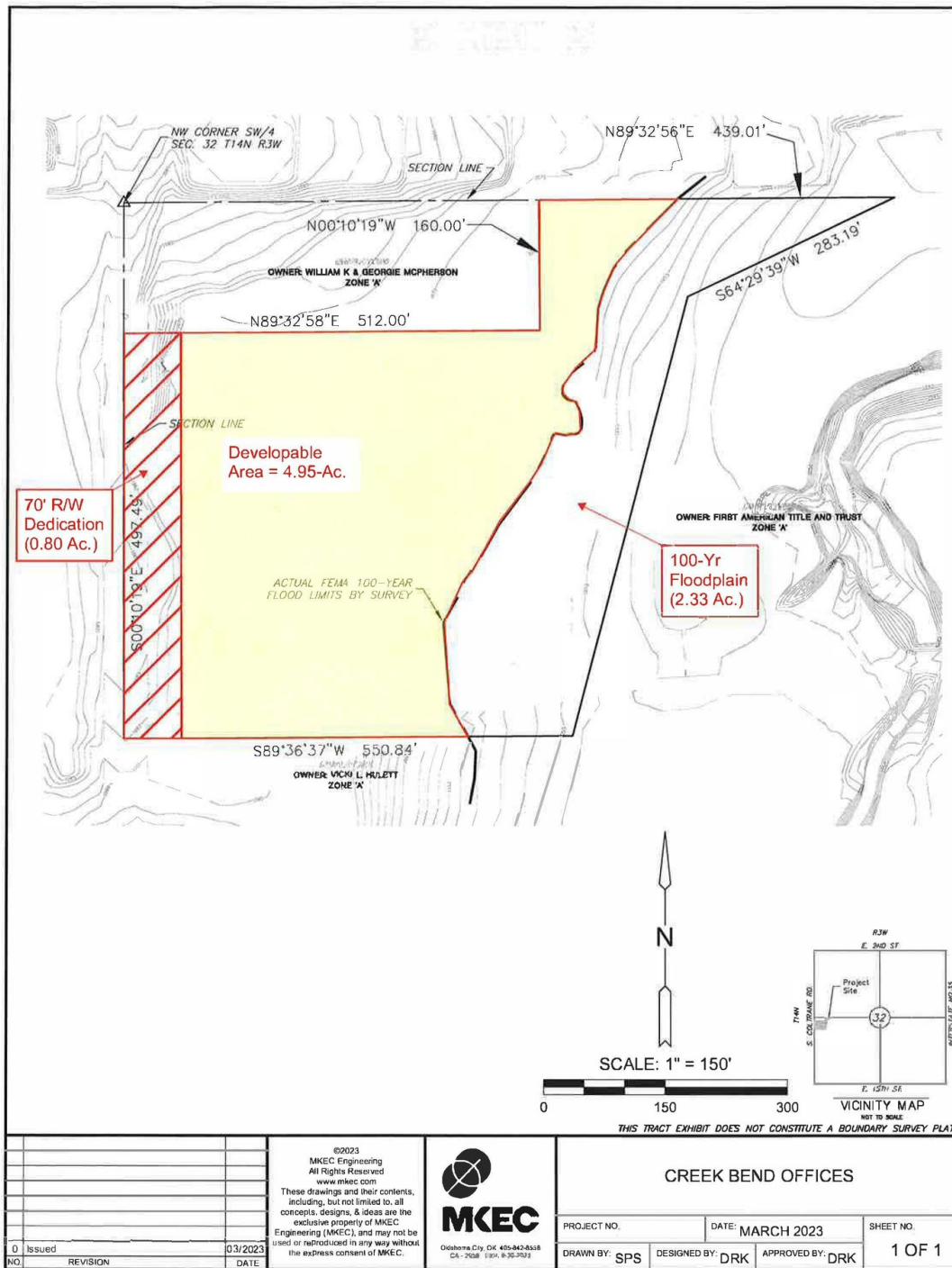
Sale Price:	\$999,750
Lot Size:	8.08 Acres

TOM FIELDS

tfields@priceedwards.com

O: 405.239.1205

DEVELOPMENT LAND FOR SALE COLTRANE, BETWEEN 15TH AND 2ND ST. EDMOND, OK 73034



TOM FIELDS

tfields@priceedwards.com

O: 405.239.1205